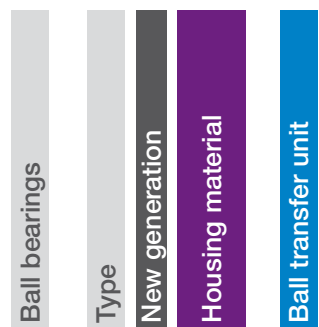


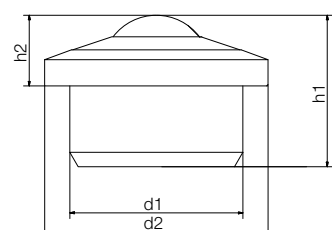
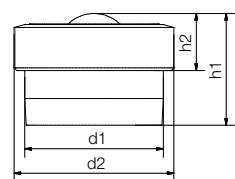


Type	Material
------	----------

BB-522B-B180-POM



Polymer ball transfer unit
 POM = POM (ball transfer unit)
 Option
 B = New generation



BB-505(B)-B180-POM

BB-515(B)-B180-POM
 BB-522(B)-B180-POM

Technical data and dimensions [mm]

Installation size	Max. stat. load capacity axial [N]	Inner Ø		Height		Weight [g]	Part No.
		d1	d2	h1	h2		
505	35	10.4	12.0	8.4	4.3	0.88	BB-505-B180-POM
515	80	24.0	31.0	21.0	9.8	10.73	BB-515-B180-POM
522	110	36.0	45.0	30.0	9.8	28.80	BB-522-B180-POM

Technical data and dimensions [mm]

Installation size	Max. stat. load capacity axial [N]	Inner Ø		Height		Weight [g]	Part No.
		d1	d2	h1	h2		
505B	150	10.4	12.0	8.4	4.3	0.92	BB-505B-B180-POM
515B	300	24.0	31.0	21.0	9.8	11.19	BB-515B-B180-POM
522B	500	36.0	45.0	30.0	9.8	29.97	BB-522B-B180-POM
530B	1000	45.0	55.0	37.0	13.8	67.40	BB-530B-B180-POM New



Recommended tolerances

We recommend the following hole tolerances for the ball transfer units housings:

Installation size

- 505 ▶ 10.40mm H7
- 515/515A ▶ 24mm H7
- 522/522A ▶ 36mm H7

In general: The height tolerance of all installation sizes is ± 0.2mm



Order example:

BB-505-B180-POM = Polymer ball transfer unit with housing material xirodur® B180 and POM ball transfer unit

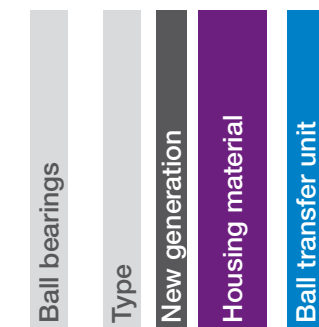


Available from stock



Type	Material
------	----------

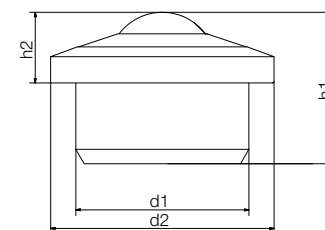
BB-522B-ES



Ball transfer unit
 ES =
 Stainless steel

With stainless steel balls

Electrostatically dissipative



Technical data and dimensions [mm]

Installation size	Max. stat. load capacity axial [N]	Inner Ø		Height		Weight stainless steel [g]	Part No.
		d1	d2	h1	h2		
515	300	24.0	31.0	21.0	9.8	22.8	BB-515B-B180-ES
515	300	24.0	31.0	21.0	9.8	22.8	BB-515B-F182-ES
522	500	36.0	45.0	30.0	9.8	66.6	BB-522B-B180-ES

Technical data and dimensions [mm]

Installation size	Max. stat. load capacity axial [N]	Inner Ø		Height		Weight [g]	Part No.
		d1	d2	h1	h2		
515B	300	24.0	31.0	21.0	9.8	11.19	BB-515B-B180-ES
522B	500	36.0	45.0	30.0	9.8	29.97	BB-522B-B180-ES



Recommended tolerances

We recommend the following hole tolerances for the ball transfer units housings:

Installation size

- 515/515A ▶ 24mm H7
- 522/522A ▶ 36mm H7

In general: The height tolerance of all installation sizes is ± 0,2mm



Order example:

BB-515-B180-ES = Polymer ball transfer unit with housing material xirodur® B180 and stainless steel ball transfer unit



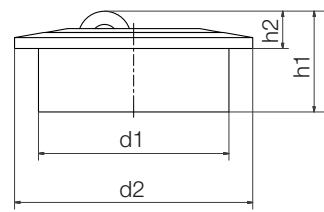
Available from stock



For high loads (HH)



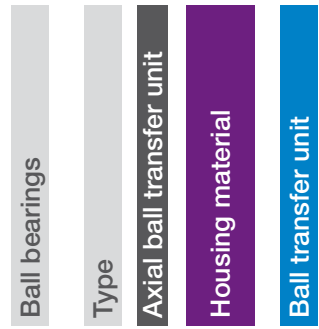
With soft roller made from xirodur® D180 (HS)



Order key

Type	Material
------	----------

BB-522A-B180-HS



Options

Ball transfer unit

HH (Hard roller) =

xirodur® B180

HS (Soft roller) =

xirodur® D180

BB-515A-B180-HH/-HS

BB-522A-B180-HH/-HS

Technical data and dimensions [mm]

Installation size	Max. stat. load capacity axial [N]	Inner Ø		Height		Weight		Part No.
		d1	d2	h1	h2	HS [g]	HH [g]	
515A	150	24.0	31.0	14.3	5.3	9.96	9.99	BB-515A-B180-□
522A	300	36.0	45.0	19.2	7.05	24.69	24.71	BB-522A-B180-□



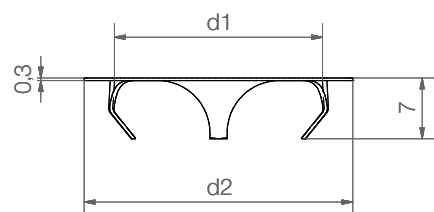
Order example:

BB-515A-B180-HS = Axial polymer ball transfer unit with housing material xirodur® B180 and soft roller made from xirodur® D180



Available from stock

Accessories: Clamping rings for xiros® polymer ball transfer units



xiros® clamping rings made of stainless steel offer the possibility to install xiros® polymer ball transfer units in another orientation than the standard horizontal position. Easy assembly and disassembly.

Dimensions [mm]

For ball transfer unit	d1	d2	Housing hole	Weight [g]	Part No.
BB-515-B180-POM/BB-515A-B180-□	24	31	25H7	0.91	BB-515-CR
BB-522-B180-POM/BB-522A-B180-□	36	41	37H7	1.61	BB-522-CR



Available from stock

