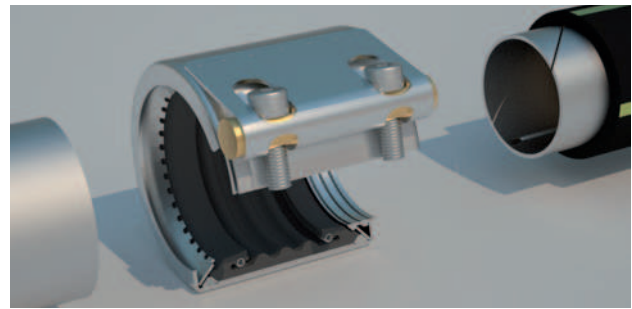


STRAUB-COMBI-GRIP / STRAUB-PLAST-GRIP

Practical – for transitions

The STRAUB-COMBI-GRIP ensures a perfect connection at transitions between plastic and metal pipes by compensating different outside diameters. The advanced technology and high-specification manufacture ensure increased safety and reliability wherever this coupling is used.

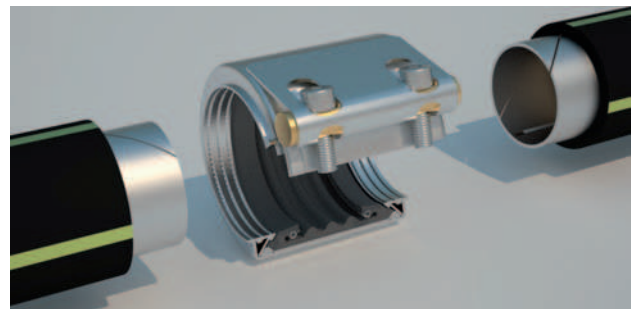


Sectional view

Example for ordering:
STRAUB-COMBI-GRIP 160.0 / 159.0 mm, EPDM/SS

Universal – for plastic pipes

The STRAUB-PLAST-GRIP is the ideal combination for thick- and thin-walled plastic tubes. It is used for gas and water supply applications, for industrial pipeline constructions, suction and pressure lines.



Sectional view

Example for ordering:
STRAUB-PLAST-GRIP 90.0 mm, EPDM/SS



Connection of PE and stainless steel pipes, which have been installed in a well room



Water treatment application; connections between the racks

STRAUB Stiffening rings

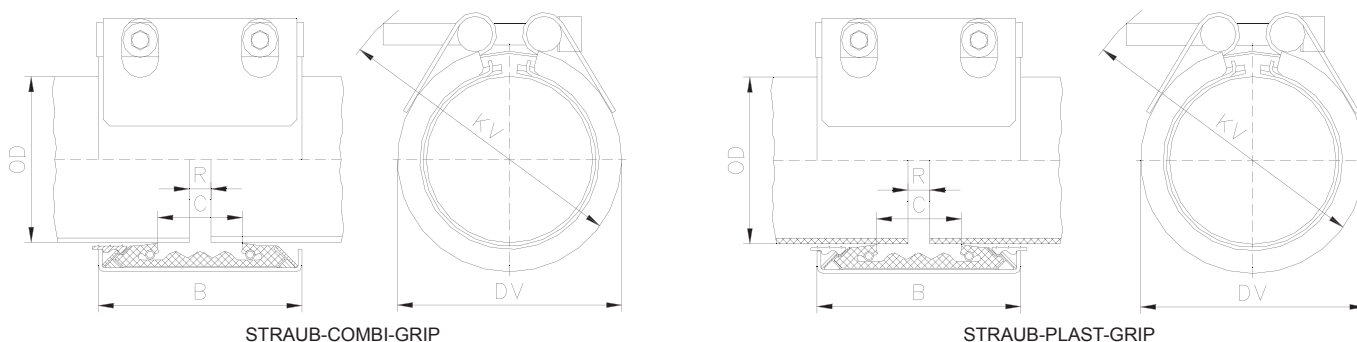
Typical for pipes made of PE/PP materials are the deformation and thermal stretching characteristics. The material tends to flow under pressure and temperature influences. This process is largely dependent on time.

External radial loading on the pipe requires the insertion of a STRAUB internal stiffening ring (two stiffening rings per joint; material AISI 316 L / DIN 1.4435). This also inhibits the tendency of the plastic to flow over the course of time.

For proper installation of the stiffening ring, the inside diameter of the plastic pipe (PE/PP) is required.

STRAUB-COMBI-GRIP / STRAUB-PLAST-GRIP Ø 40.0 - 160.0 mm

Components / Materials	W1	W2	W4	W5
Casing		AISI 304	AISI 304	
Bolts		AISI 4135	A4 - 80	
Bars		AISI 12 L 14, galvanised	AISI 304	
Anchoring rings		AISI 301 / 304	AISI 304	
Strip insert (option)		AISI 316 L / PVDF	AISI 316 L / PVDF	
Sealing sleeve EPDM	Temp.: -20°C up to +100°C Medium: all qualities of water, waste water, air, solids and chemical products			
Sealing sleeve NBR	Temp.: -20°C up to +80°C Medium: water, gas, oil, fuel and other hydrocarbons			



STRAUB-COMBI-GRIP

OD [mm]	Clamping range Plastic [mm]	Clamping range Metal [mm]	PS [bar]	B [mm]	C [mm]	DV [mm]	KV [mm]	R without strip insert [mm]	R with strip insert [mm]	Torque rate [Nm]	Allen head [mm]	Thread M...
40.0/38.0	39.0 - 40.5	37.5 - 39.0	16.0	61	19	60	90	5	5-10	15	6	8
40.0/42.4	39.0 - 40.5	42.0 - 43.5	16.0	61	20	63	95	5	5-10	15	6	8
50.0/48.3	49.0 - 50.5	47.8 - 49.0	16.0	61	26	70	100	5	5-10	15	6	8
63.0/60.3	62.0 - 64.0	59.7 - 61.0	16.0	76	32	85	115	5-10	5-25	20	6	8
75.0/76.1	74.0 - 76.0	75.0 - 77.5	16.0	94	39	100	137	5-10	5-25	25	8	10
90.0/88.9	89.0 - 91.0	87.0 - 90.0	16.0	94	39	118	152	5-10	5-25	25	8	10
110.0/108.0	109.0 - 111.0	106.5 - 110.5	16.0	94	39	135	167	5-10	5-25	25	8	10
110.0/114.3	109.0 - 111.0	112.0 - 116.0	16.0	97	45	139	172	5-10	5-25	25	8	10
114.3/114.3	113.0 - 115.0	112.0 - 116.0	16.0	94	39	140	177	5-10	5-25	25	8	10
140.0/139.7	139.0 - 142.0	137.5 - 141.0	16.0	109	43	168	200	5-15	5-30	60	10	12
160.0/159.0 ¹	159.0 - 162.0	157.0 - 160.5	16.0	109	43	188	215	5-15	5-30	60	10	12

STRAUB-PLAST-GRIP

OD [mm]	Clamping range [mm]	PS [bar]	B [mm]	C [mm]	DV [mm]	KV [mm]	R without strip insert [mm]	R with strip insert [mm]	Torque rate [Nm]	Allen head [mm]	Thread M...
40.0	39.0 - 40.5	16.0	61	19	60	90	5	5-15	15	6	8
50.0	49.0 - 50.5	16.0	61	61	70	100	5	5-15	15	6	8
63.0	62.0 - 64.0	16.0	76	76	85	115	5-10	5-20	20	6	8
75.0	74.0 - 76.0	16.0	94	94	99	137	5-10	5-25	25	8	10
90.0	89.0 - 91.0	16.0	94	94	118	152	5-10	5-25	25	8	10
110.0	109.0 - 111.0	16.0	94	94	135	167	5-10	5-25	25	8	10
114.3	113.0 - 115.0	16.0	94	94	139	172	5-10	5-30	25	10	12
125.0	124.0 - 126.0	16.0	94	94	152	185	5-15	5-30	60	10	12
140.0	139.0 - 142.0	16.0	108	108	168	200	5-15	5-30	60	10	12
160.0 ¹	159.0 - 162.0	16.0	109	109	188	215	5-15	5-25	60	10	12

Remarks:

- Follow fitting / disassembly instructions
- PS = Working pressure considering the application loads
Test pressure = PS x 1.5 (for example industry, water supply etc.)
- For the installation of pipes of pipes made of HDPE and PP, STRAUB stiffening rings are required
- Strip inserts are required for special applications, see page 43

¹ Available in version W2 only (anchoring ring on the plastic end made of 1.0036, galvanized)

For IPS sizes in bold see page 54 for actual OD